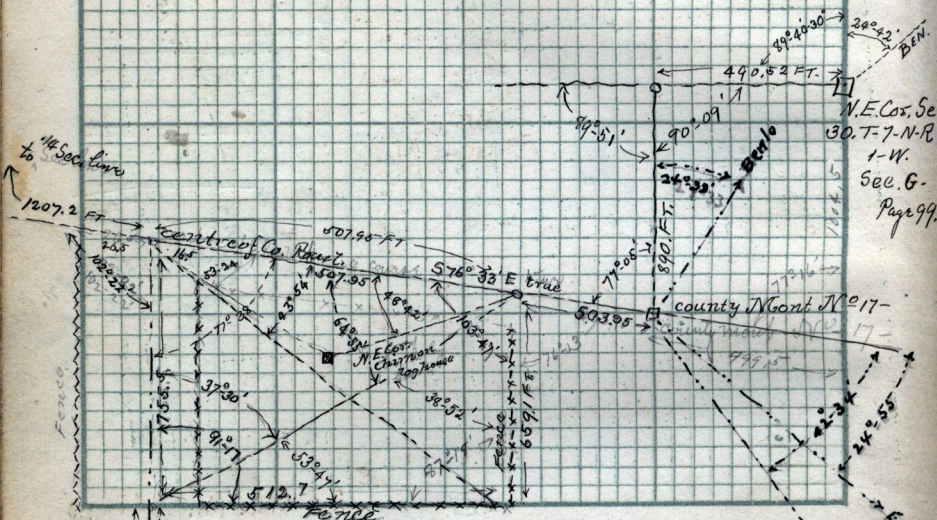


Copy of deed from Robert Winter to Josephus Hatch, dated Feb. 3rd 1870. P. 55
 Part of the N.W. Quar. Sec. 21-Tp 6-N-R-1-W.
 Beginning at a point 13 1/2 rods South from the N.W. cor. of said Quar. Sec. Thence East 40 rods, South 83 rods W. 40 rods, North 83 rods to beg. 20.5 a.



Chains per inch.

Survey made for Franklin Wade at Pleasant View Mar. 9-1891.

98° 22'

S.W. cor. of tract described on page 52 and page 51.

See also Book I page 108

Chat McDonald deed W. H. Grandall, rec'd chain.

Sec. 6 - pg. 99